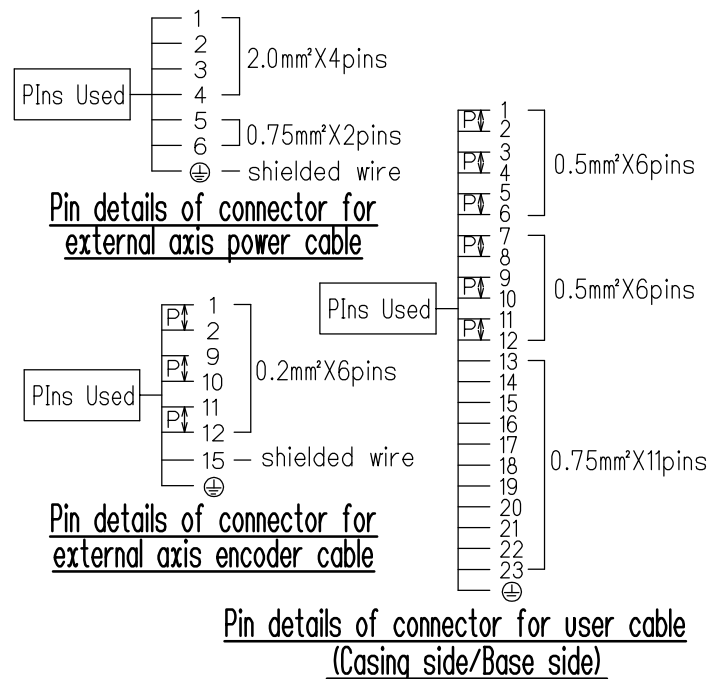
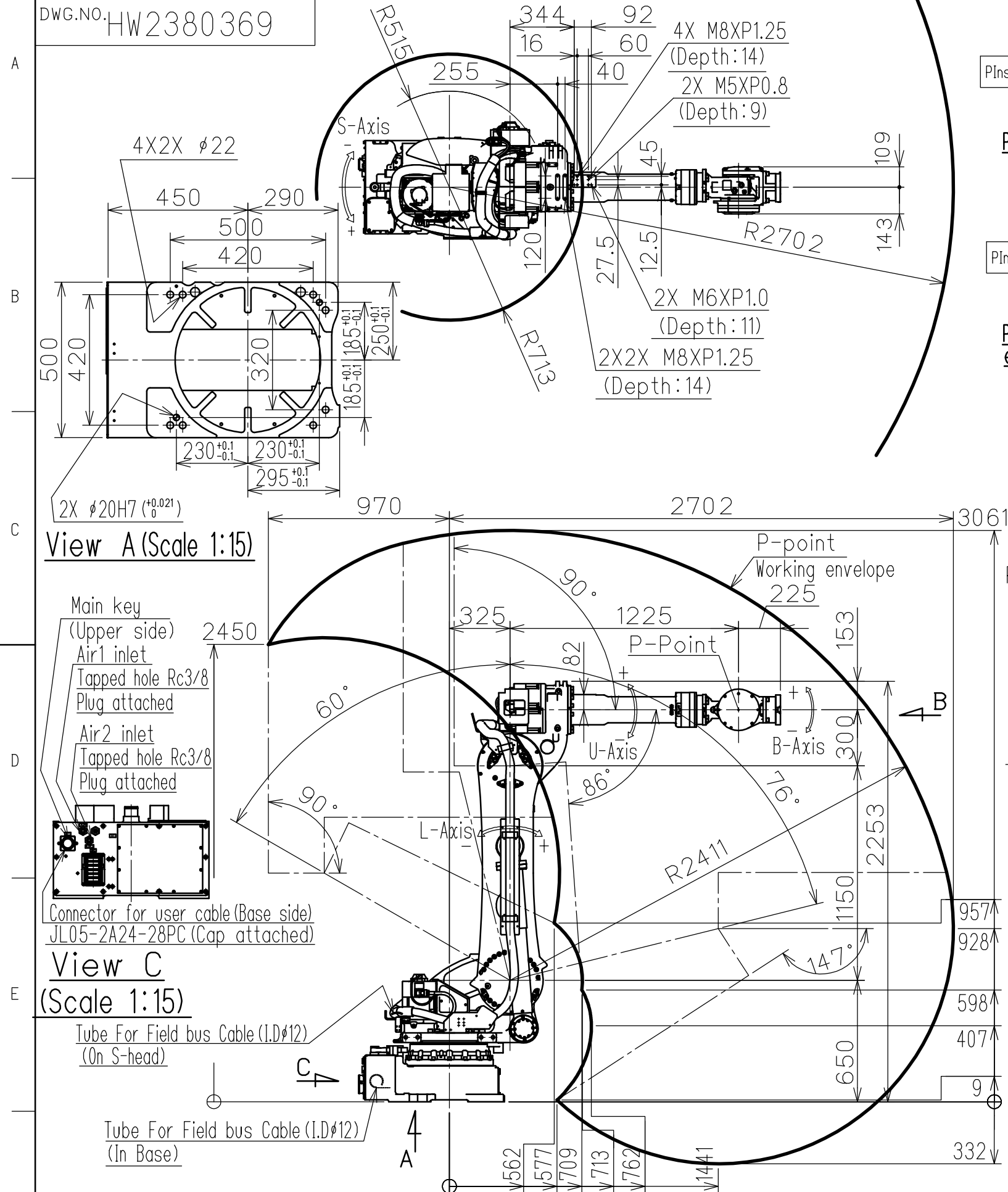


DWG.NO. HW2380369



| Type             | Specification          |
|------------------|------------------------|
| YR-1-06VX180-F00 | Food-grade grease type |

| Item                                   | Model                     | MOTOMAN-GP180   |
|--|---------------------------|---|
| Configuration                          |                           | Vertically articulated  |
| Degree of Freedom                      |                           | 6   |
| Payload                                | Wrist                     | 180kg   |
|  | On U-arm                  | 30kg  |
| Repeatability (*1)                     |                           | 0.05mm  |
| Range of Motion                        | S-Axis (Turning)          | -180° - +180°   |
|  | L-Axis (Lower Arm)        | -60° - +76°   |
|  | U-Axis (Upper Arm)        | -86° - +90°   |
|  | R-Axis (Roll)             | -360° - +360°   |
|  | B-Axis (Pitch/Yaw)        | -130° - +130°   |
| Maximum Speed                          | T-Axis (Twist)            | -360° - +360°   |
|  | S-Axis                    | 2.18 rad/s, 125°/s  |
|  | L-Axis                    | 2.01 rad/s, 115°/s  |
|  | U-Axis                    | 2.18 rad/s, 125°/s  |
|  | R-Axis                    | 3.18 rad/s, 182°/s  |
| Allowable Moment                       | B-Axis                    | 3.05 rad/s, 175°/s  |
|  | T-Axis                    | 4.63 rad/s, 265°/s  |
|  | R-Axis                    | 1000 N·m (102kgf·m)   |
| Allowable Inertia (GD <sup>2</sup> /4) | B-Axis                    | 1000 N·m (102kgf·m)   |
|  | T-Axis                    | 618 N·m (63kgf·m)   |
|  | R-Axis                    | 90 kg·m <sup>2</sup>  |
| Ambient Conditions                     | Temperature               | +15°C - +45°C   |
|  | Humidity                  | 20%RH - 80%RH   |
|  | Vibration acceleration    | 4.9m/s <sup>2</sup> (0.5G) or less  |
|  | Altitude                  | 1000m or less   |
|  | Flatness for installation | 0.5mm or less   |
| Others                                 |                           | •Free from oil soot.<br>•Free from explosive and corrosive gas or liquid.<br>•Free from excessive electrical noise (plasma).<br>•Free from strong magnetic field. |
|  |                           |   |
| Power requirements                     |                           | 5.0kVA  |
| Applicable controller                  |                           | YRC1000   |

\*1 Repeatability conforms to ISO 9283. Units:mm  
\*2 The manipulator is in the home position in this drawing.

**View D (Scale 1:15)**

**View B (Scale 1:10)**

**YASKAWA**  
株式会社 安川電機

作 図 Y.Ishibe  
照 査 I.Ooka  
承 認 T.Namie

TITLE MOTOMAN-GP180 (Food-grade grease type)  
DIMENSION DIAGRAM

DRWN DATE May.27.' 21  
DWG.NO. HW2380369

SIZE A 3